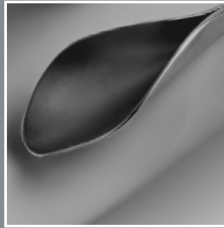


Hot&cold

Concerto



CONCERTO: THE HARMONIC PERFORMANCE OF DESIGN AND TECHNOLOGY

Concerto is the new Necta's H&C model that, thanks to its reduced footprint and wide choice of drink, offers an ideal solution for small to medium locations, or environments where space is limited.

Concerto offers enhanced performance to ensure top quality drinks with every cup and an elegant design that complements each environment it is in. With its innovative Z4000 espresso and double espresso technology and sturdy Italian craftsmanship, **Concerto** is bound to become the point of reference on its market segment for the years to come.

DESIGN

- Refined and high tech design
- Double backlit front panel
- Chromium plated frame around selection area

USER INTERFACE

- 20 Direct selections
- Capacitive keypad with LED lit buttons
- Graphic display 128 x 64 pixel
- Metallic payment interface
- Optional delivery area lighting

TECHNICAL INNOVATION

- Z4000 available in small and large version
- Double espresso version available
- New grinder
- Freemix patented technology for instant products

ELECTRONICS

- Advanced 16 bit electronics with flash memory
- Master/slave connection with other Necta's S&F models
- Possibility to create or modify set-up through GIGA

CAPACITY

CUPS	500
STIRRERS	450
COFFEE BEANS CANISTER CAPACITY	3,2 KG
SOLUBLE CANISTER CAPACITY	2,5 L - 4,5 L - 6 L
STAINLESS STEEL ESPRESSO BOILER	0,5 L

FEATURES

HEIGHT	1700 MM
WIDTH	600 MM
DEPTH	740 MM
DEPTH WITH OPEN DOOR	1250 MM
WEIGHT	125 KG APPROX.
POWER SUPPLY	230 V
FREQUENCY	50 Hz
INSTALLED POWER	1850 W

ENERGY CONSUMPTION

TO REACH OPERATING TEMPERATURE	36,87 WH
FOR EACH HOUR OF STAND-BY	1320 WH

CONFIGURATIONS

	ESPRESSO	DOUBLE ESPRESSO
SUGAR +	☐	☐
SUGAR -	☐	☐
NO CUP	•	•
ESPRESSO	☐	☐☐
BLACK COFFEE	☐	☐☐
MACCHIATO	☐	☐☐
CAPPUCCINO	☐	☐☐
CAPPUCCINO WITH CHOCOLATE	☐	☐☐
MOCACCINO	☐	•
DECAFFEINATED COFFEE	☐	☐
DECAFFEINATED MACCHIATO	☐	☐
DECAFFEINATED CAPPUCCINO	☐	☐
DECAF. CAPP. WITH CHOCOLATE	☐	•
BARLEY COFFEE	☐	☐
BARLEY CAPPUCCINO	☐	☐
MACCHIATO BARLEY COFFEE	☐	☐
GINSENG COFFEE	•	•
CHOCOLATE	☐	☐
MILK CHOCOLATE	☐	•
LEMON TEA	☐	☐
MILK	☐	•
MILK AND COFFEE	☐	•
MACCHIATO GINSENG COFFEE	•	•
GINSENG CAPPUCCINO	•	•
TEA	•	•
TEA WITH MILK	•	•
STRONG CHOCOLATE	•	•
HOT WATER	•	•
CUP ONLY	•	•

• available as alternative to standard preselections/selections.

☐ second type of coffee in beans available.



ISO 14001 : 2004



ISO 9001:2008



Via Roma, 24 - Valbrembo (BG)
Tel. 035 606111 - Fax 035 606464

www.nwglobalvending.com

IS A BRAND OF

N&W